

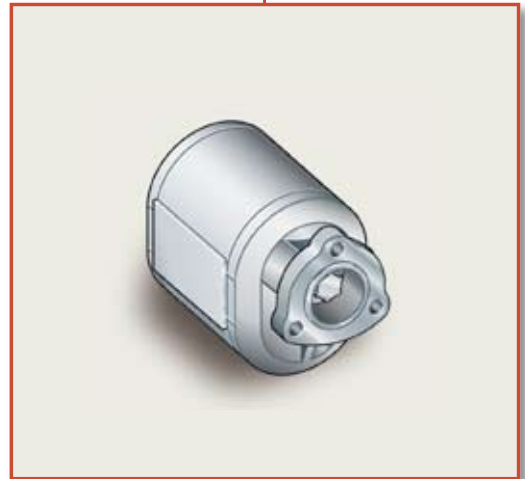
DAB

Pompa ad Ingranaggi Gear Pump

CODICE DI ORDINAZIONE - ORDERING CODE

200 **DAB** **2** **10** **D** **0**
 | | | | | |
 TIPO/TYPE GRUPPO POMPA/PUMP GROUP CILINDRATA/DISPLACEMENT
 ROTAZIONE/ROTATION
 D = DESTRO/CLOCKWISE
 S = SINISTRO/ANTICLOCKWISE
 DIN 5482
 POMPA AD INGRANAGGI/GEAR PUMP

DIN
5 4 8 2
DAB 2 10
DAB 2 15
DAB 2 25
DAB 2 36
DAB 3 25
DAB 3 36
DAB 3 46
DAB 3 55



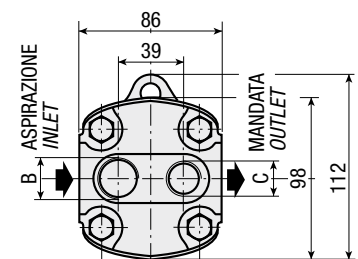
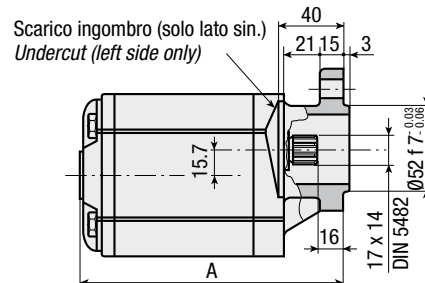
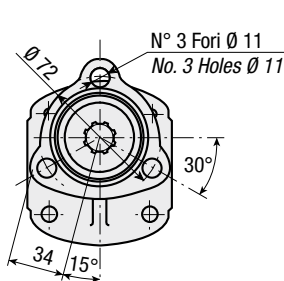
CARATTERISTICHE E DATI TECNICI - SPECIFICATIONS AND TECHNICAL DATA

TIPO TYPE	CODICE CODE	CILINDRATA DISPLACEMENT cm ³ /rev.	A mm	B ASPIRAZIONE INLET	C MANDATA OUTLET	PESO WEIGHT kg
DAB 2 10	200DAB210 D S 0	10	139	3/4" G	1/2" G	2.7
DAB 2 15	200DAB215 D S 0	15	148	3/4" G	1/2" G	3.0
DAB 2 25	200DAB225 D S 0	25	164.5	3/4" G	1/2" G	3.2
DAB 2 36	200DAB236 D S 0	35	181.5	3/4" G	1/2" G	3.7
DAB 3 25	200DAB325 D S 0	25	160.5	1" G	3/4" G	4.1
DAB 3 36	200DAB336 D S 0	36	171	1" G	3/4" G	5.4
DAB 3 46	200DAB346 D S 0	46	180	1" G	3/4" G	5.8
DAB 3 55	200DAB355 D S 0	55	188.5	1" G	3/4" G	6.2

KIT RASAMENTI
 THRUST PLATES KIT
 COD. 2D441215000

KIT GUARNIZIONI COMPLETO
 COMPLETE SEALS KIT
 COD. 2D551215000

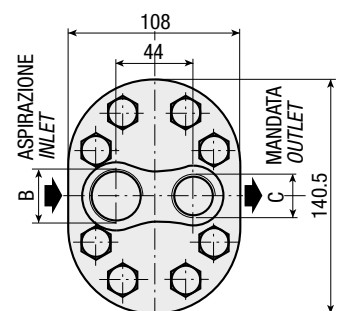
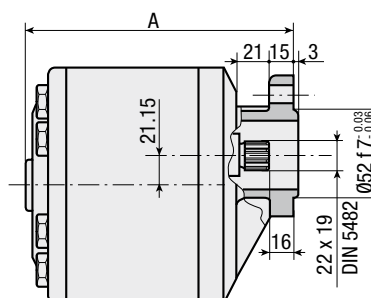
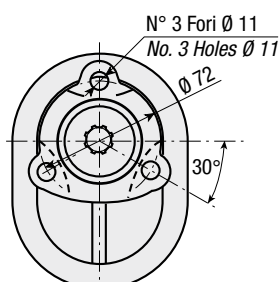
DAB 2



KIT RASAMENTI
 THRUST PLATES KIT
 COD. 2D441325000

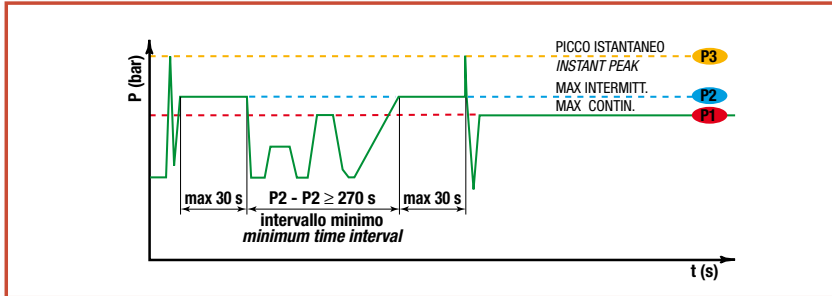
KIT GUARNIZIONI COMPLETO
 COMPLETE SEALS KIT
 COD. 2D551325000

DAB 3



DATI TECNICI - TECHNICAL DATA

ESEMPIO CICLI LAVORO - EXAMPLE OF WORKING CYCLES

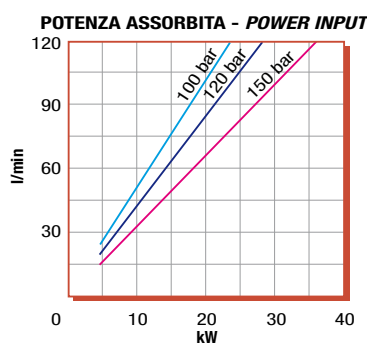
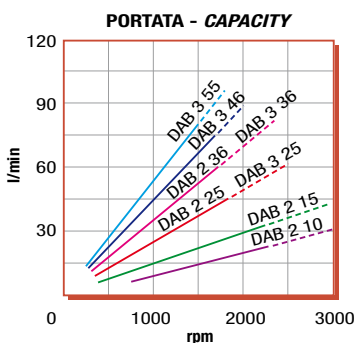


Pressione d'aspirazione: Inlet pressure:	0.7 ÷ 1.5 bar (assoluti/absolute)
Campo viscosità lavoro: Operating viscosity range:	12 ÷ 100 cSt
Temperatura fluido °C (t): Fluid temperature °C (t):	-10° + 80° C

Pressione Lavoro Working Press. P2	Contaminazione - Contamination		Filtro - Filter $\beta_x = 75$ 40 μm
	NAS 1638	ISO 4406	
≤ 200 bar	12	21/18	

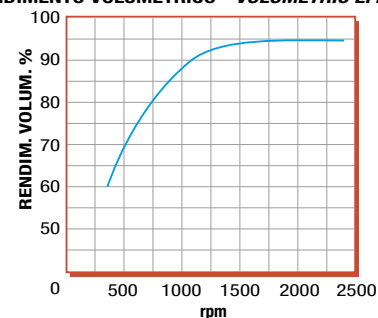
◀ **FILTRAZIONE CONSIGLIATA (ritorno o mandata)**
RECOMMENDED FILTERING (return or outlet)

TIPO - TYPE			DAB 2 10	DAB 2 15	DAB 2 25	DAB 2 36	DAB 3 25	DAB 3 36	DAB 3 46	DAB 3 55
Cilindrata Displacement	Vg	cm ³ /n cm ³ /rev.	10	15	25	35	25	36	46	55
Pressione massima continua Max continuous operating pressure	P1	bar	180	140	120	100	130	130	120	120
Pressione massima intermittente Max intermitt. operat. press. (max 30 s)	P2		200	160	150	120	150	150	140	140
Pressione massima di picco Max peak pressure (≤ 0.1 s)	P3		270	210	180	150	200	200	180	180
Velocità massima intermittente Max intermittent speed (P ≤ 20 bar)	n3	n/min r.p.m.	3000	3000	2500	2100	2500	2300	2000	1800
Velocità massima continua Max continuous speed ($\leq P1$)	n1		1500	1500	1500	1400	1500	1500	1500	1300
Velocità minima intermittente Min intermittent speed ($\leq P2 \times 0.5$) (max 30 s)	n4		800	650	650	600	600	550	550	550

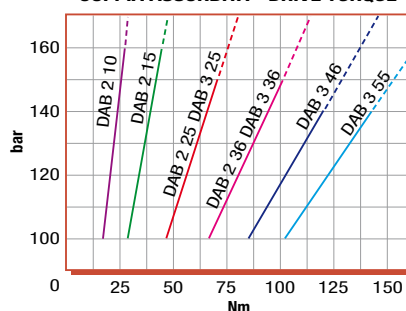


DIAGRAMMI - DIAGRAMS

RENDIMENTO VOLUMETRICO - VOLUMETRIC EFFICIENCY



COPPIA ASSORBITA - DRIVE TORQUE



RILIEVI ESEGUITI CON OLIO
ISO VG 46 A 50° C ($\sqrt{v} = 30$ cSt)
THE ABOVE SPECIFICATIONS
REFER TO OIL TYPE ISO
VG 46 AT 50° C ($\sqrt{v} = 30$ cSt)