

BIDIREZIONALE
BI-ROTATIONAL

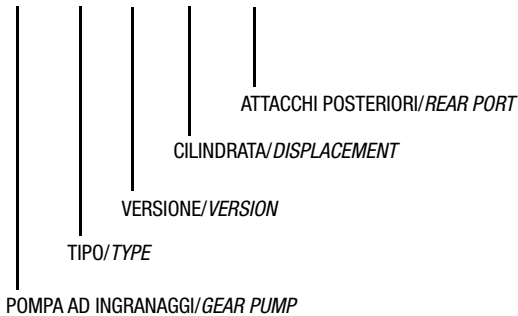
GP

Pompa ad Ingranaggi
Gear Pump

CODICE DI ORDINAZIONE - ORDERING CODE

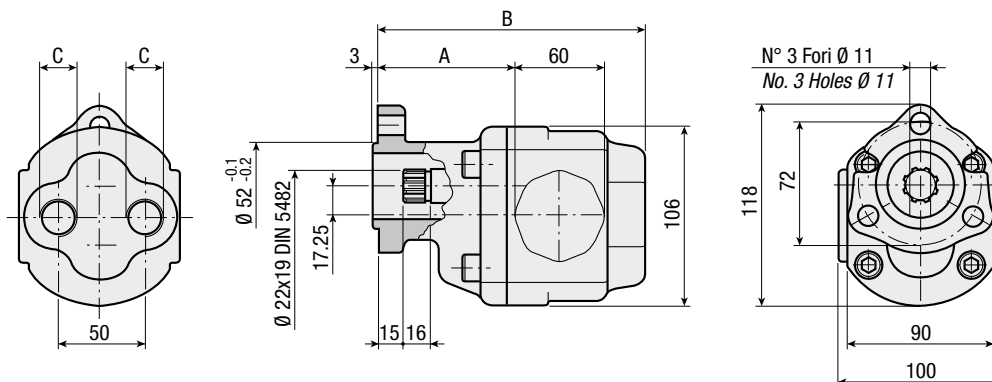
200 GP 0 015 AT

DIN GP 15 AT
GP 25 AT
GP 40 AT



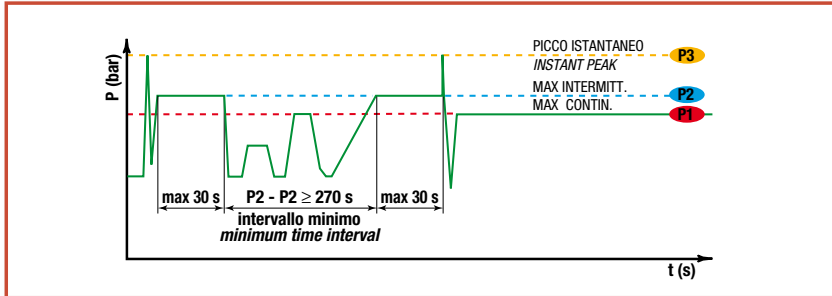
CARATTERISTICHE E DATI TECNICI - SPECIFICATIONS AND TECHNICAL DATA

| TIPO TYPE | CODICE CODE | CILINDRATA DISPLACEMENT cm ³ /rev. | A mm | B mm | C | | PESO WEIGHT kg |
|--------------|----------------|---|---------|---------|----------------------|-------------------|----------------------|
| | | | | | ASPIRAZIONE INLET | MANDATA OUTLET | |
| GP 15 AT | 200GP0015AT | 15.5 | 82 | 143 | 3/4" G | 3/4" G | 5.4 |
| GP 25 AT | 200GP0025AT | 26.1 | 86 | 158 | 3/4" G | 3/4" G | 6.1 |
| GP 40 AT | 200GP0040AT | 38.8 | 88 | 176 | 3/4" G | 3/4" G | 6.8 |



DATI TECNICI - TECHNICAL DATA

ESEMPIO CICLI LAVORO - EXAMPLE OF WORKING CYCLES

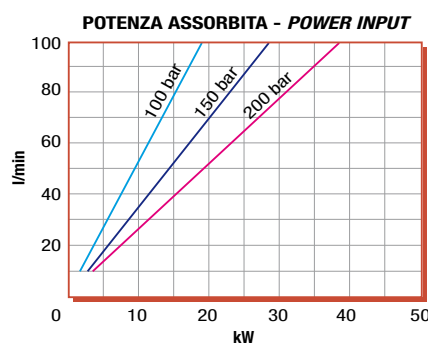
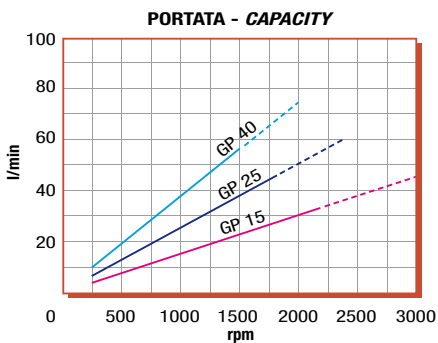


| | |
|---|--------------------------------------|
| Pressione d'aspirazione: Inlet pressure: | 0.7 ÷ 1.5 bar (assoluti/absolute) |
| Campo viscosità lavoro: Operating viscosity range: | 12 ÷ 100 cSt |
| Temperatura fluido °C (t): Fluid temperature °C (t): | -10° + 80° C |

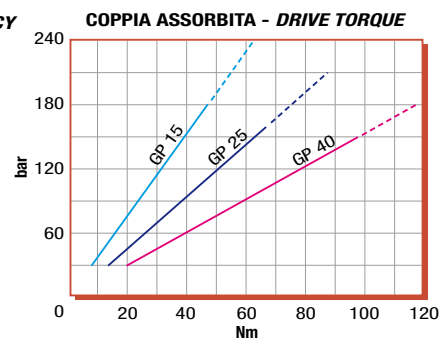
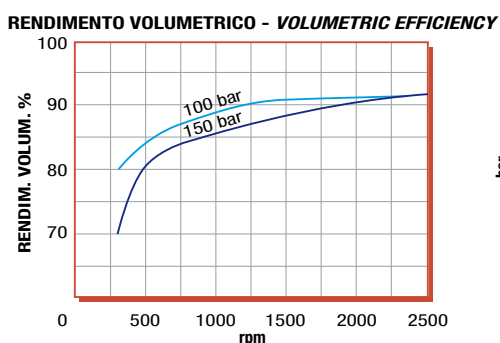
| Pressione Lavoro Working Press. P2 | Contaminazione - Contamination | | Filtro - Filter $\beta_x = 75$ 40 μm |
|---------------------------------------|--------------------------------|----------|---|
| | NAS 1638 | ISO 4406 | |
| ≤ 200 bar | 12 | 21/18 | |

◀ **FILTRAZIONE CONSIGLIATA (ritorno o mandata)**
RECOMMENDED FILTERING (return or outlet)

| TIPO - TYPE | | GP15AT | GP25AT | GP40AT |
|--|--|--------|--------|--------|
| Cilindrata Displacement | Vg | 15.5 | 26.1 | 38.8 |
| Pressione massima continua Max continuous operating pressure | P1 | 160 | 140 | 130 |
| Pressione massima intermittente Max intermitt. operat. press. | (max 30 s) P2 | 180 | 160 | 150 |
| Pressione massima di picco Max peak pressure | (≤ 0.1 s) P3 | 250 | 210 | 200 |
| Velocità massima intermittente Max intermittent speed | (P ≤ 20 bar) n3 | 3000 | 2500 | 2000 |
| Velocità massima continua Max continuous speed | ($\leq P1$) n1 | 1800 | 1500 | 1300 |
| Velocità minima intermittente Min intermittent speed | ($\leq P2 \times 0.5$) (max 30 s) n4 | 600 | 500 | 500 |



DIAGRAMMI - DIAGRAMS



RILIEVI ESEGUITI CON OLIO
ISO VG 46 A 50° C ($\sqrt{v} = 30$ cSt)
THE ABOVE SPECIFICATIONS
REFER TO OIL TYPE ISO
VG 46 AT 50° C ($\sqrt{v} = 30$ cSt)