

# NFL

## Pompa ad Ingranaggi Gear Pump

### CODICE DI ORDINAZIONE - ORDERING CODE

**200** | **NFL** | **P11** | **D** | **0**  
 | | | | |  
 TIPO/TYPE | CILINDRATA/DISPLACEMENT | ROTAZIONE/ROTATION  
 0 = ATTACCHI POSTERIORI / REAR PORT  
 L = ATTACCHI LATERALI / SIDE PORT  
 D = DESTRO/CLOCKWISE  
 S = SINISTRO/ANTICLOCKWISE  
 POMPA AD INGRANAGGI/GEAR PUMP

**DIN**  
5 4 8 2

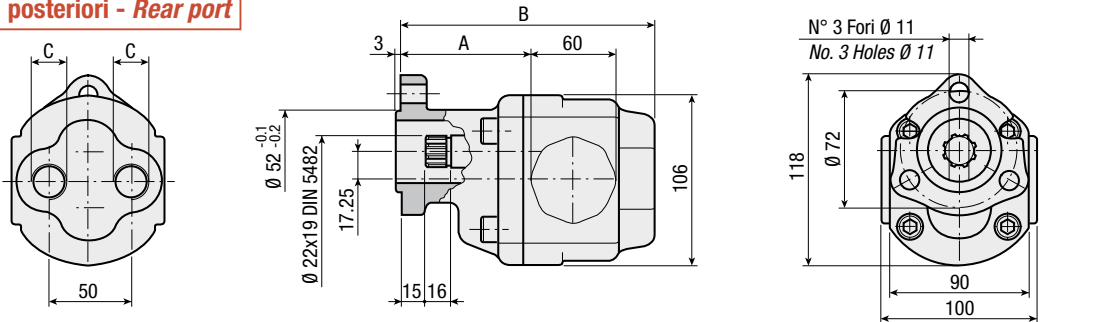
**NFL 11-0**  
**NFL 15-0**  
**NFL 15-L**  
**NFL 25-0**  
**NFL 40-0**



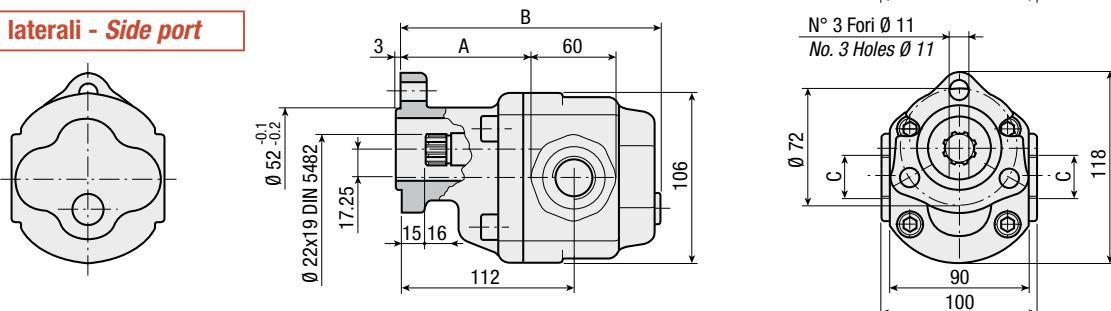
### CARATTERISTICHE E DATI TECNICI - SPECIFICATIONS AND TECHNICAL DATA

TIPO TYPE	CODICE CODE	CILINDRATA DISPLACEMENT cm <sup>3</sup> /rev.	A mm	B mm	C		PESO WEIGHT kg
					ASPIRAZIONE INLET	MANDATA OUTLET	
NFL 11 - 0	200NFLP11 D 0	11.3	80	139	3/4" G	3/4" G	5.2
NFL 15 - 0	200NFLP15 D 0	15.5	82	143	3/4" G	3/4" G	5.4
NFL 15 - L	200NFLP15 D L	15.5	82	148	3/4" G	3/4" G	5.4
NFL 25 - 0	200NFLP25 D 0	26.1	86	158	3/4" G	3/4" G	6.1
NFL 40 - 0	200NFLP40 D 0	38.8	88	176	3/4" G	3/4" G	6.8

#### Attacchi posteriori - Rear port

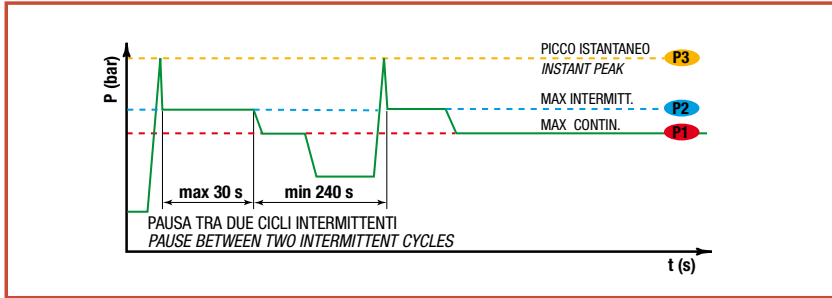


#### Attacchi laterali - Side port



## DATI TECNICI - TECHNICAL DATA

### ESEMPIO CICLI LAVORO - EXAMPLE OF WORKING CYCLES

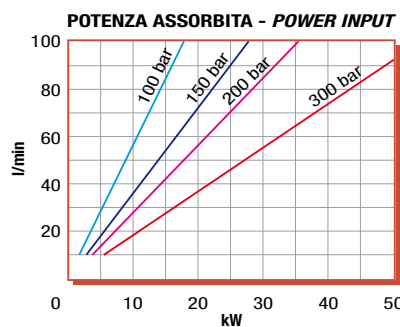
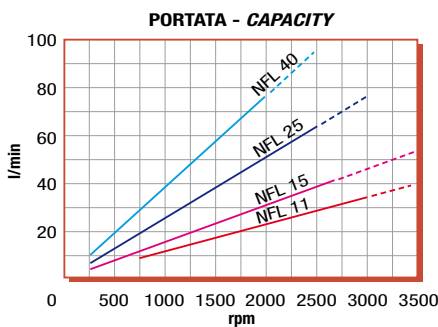


Pressione d'aspirazione: Inlet pressure:	0.7 ÷ 1.5 bar (assoluti/absolute)
Campo viscosità lavoro: Operating viscosity range:	12 ÷ 100 cSt
Temperatura fluido °C (t): Fluid temperature °C (t):	-10° + 80° C

Pressione Lavoro Working Press. P2	Contaminazione - Contamination		Filtro - Filter βx = 75
	NAS 1638	ISO 4406	
≤ 200 bar	12	21/18	40 μm
≥ 200 bar	11	20/17	25 μm

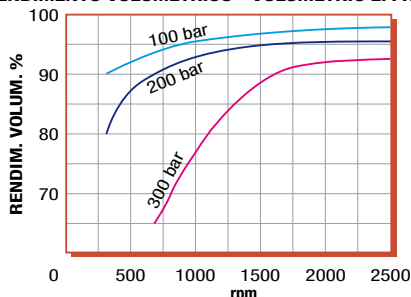
◀ **FILTRAZIONE CONSIGLIATA (ritorno o mandata)**  
**RECOMMENDED FILTERING (return or outlet)**

TIPO - TYPE			NFL11	NFL (15 - 15L)	NFL25	NFL40
	Vg	cm <sup>3</sup> /n cm <sup>3</sup> /rev.	11.3	15.5	26.1	38.8
Cilindrata Displacement						
Pressione massima continua Max continuous operating pressure	P1	bar	300	250	200	150
Pressione massima intermittente Max intermitt. operat. press. (max 30 s)	P2		330	300	230	180
Pressione massima di picco Max peak pressure (≤ 0.1 s)	P3		400	375	300	250
Velocità massima intermittente Max intermittent speed (P ≤ 20 bar)	n3	n/min r.p.m.	3500	3500	3000	2500
Velocità massima continua Max continuous speed (≤ P1)	n1		2800	2500	2000	1700
Velocità minima intermittente Min intermittent speed (≤ P2 x 0.5) (max 30 s)	n4		750	450	450	450

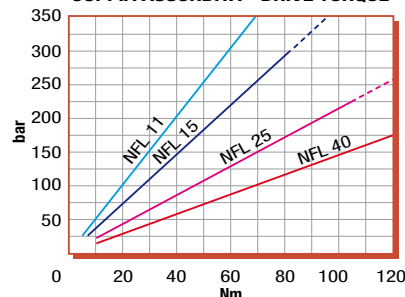


## DIAGRAMMI - DIAGRAMS

### RENDIMENTO VOLUMETRICO - VOLUMETRIC EFFICIENCY



### COPPIA ASSORBITA - DRIVE TORQUE



RILIEVI ESEGUITI CON OLIO  
 ISO VG 46 A 50° C (√= 30 cSt)  
 THE ABOVE SPECIFICATIONS  
 REFER TO OIL TYPE ISO  
 VG 46 AT 50° C (√=30 cSt)